

TitanTune™ Wavelength Tuning Kit

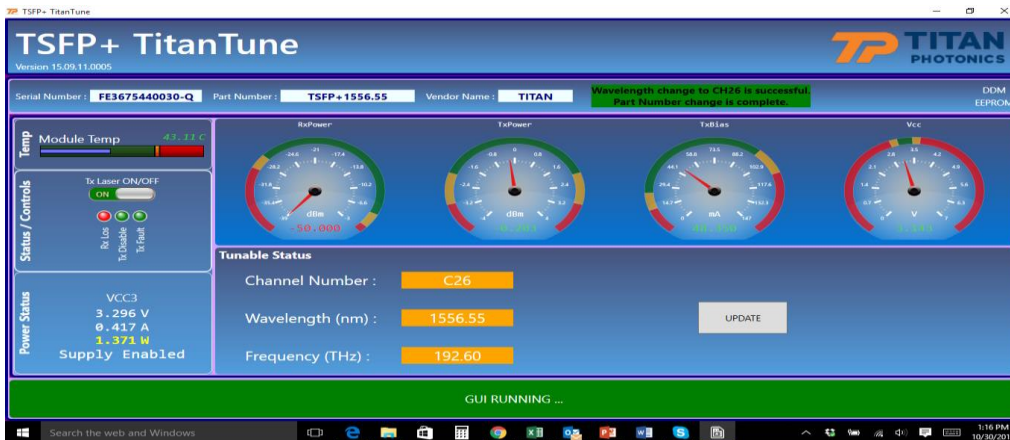
Features

- ◆ Tunes and locks Tunable 10G SFP+ wavelengths in seconds
- ◆ Easy to use Graphic User Interface (GUI)
- ◆ Integrated pull down menu with point and click channel/wavelength/frequency guide selector
- ◆ Dashboard Digital Diagnostic Monitoring (DDM) parameters
- ◆ Compatible with MSA standard transceivers



Specifications and Requirements

- ◆ Mechanical Dimension (inches): 6.9(L)x5.6(W)x1.7(H)
- ◆ Power Supply Voltage: 12V DC
- ◆ USB 2.0 connection to PC
- ◆ PC Operating System: Windows 7 or later
- ◆ PC Memory: Minimum of 2GB



TitanTune™ Graphic User Interface (GUI)

Ordering Information

Part Number	Product Description
TT-TSFP+	TitanTune™ Kit for Tunable 10G SFP+ Pluggable Transceiver