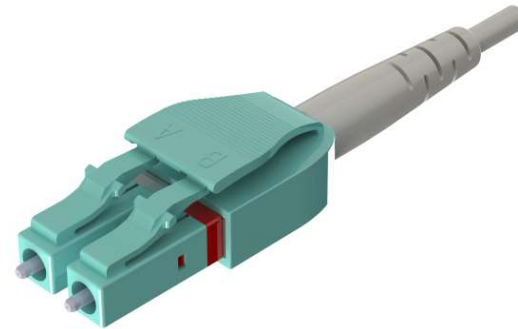


## LC Uniboot Connector

### Features:

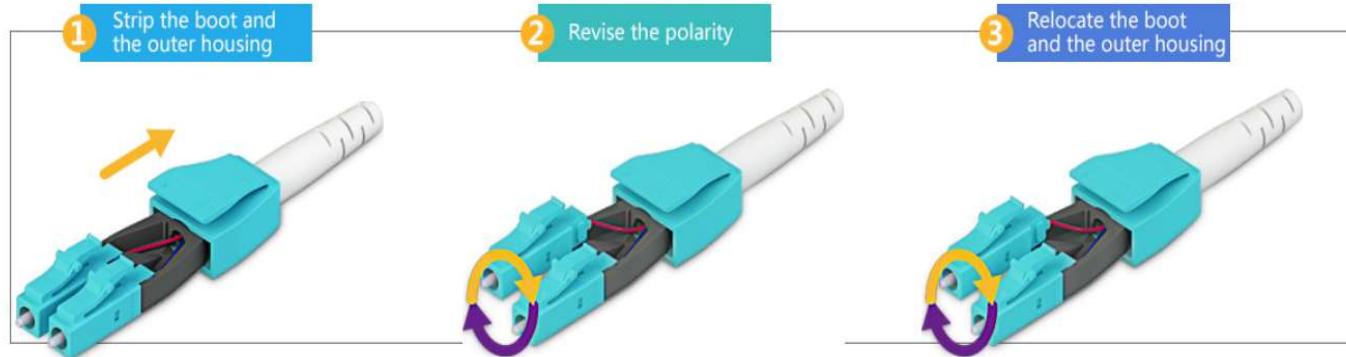
- Compact design and ensure easier release
- Easy polarity revisable
- PC/APC and Various color available
- Applied to 1.2-2.5mm cable
  
- OEM is optional
- IEC 61754-20 and GR-326-Core complaint
- RoHS/REACH and UL94-V0 inflammability complaint



## LC Uniboot Connector

### Easy Polarity Reversible

Innovatively set the two plugs of the fiber optic connector to be interchangeable. Easily strip the boot and revise the polarity.





## LC Series

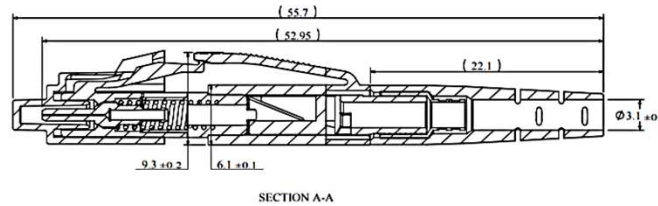
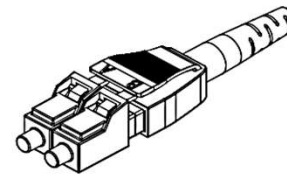
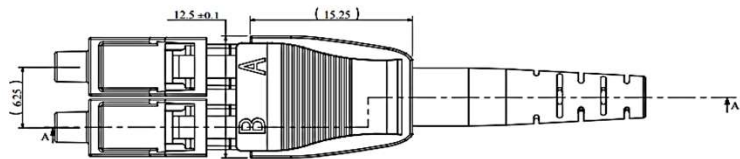
### LC Uniboot Connector



#### Specification:

Items	Single mode	Multi mode
Insertion Loss	standard IL $\leq$ 0.3dB;low IL $\leq$ 0.15dB	standard IL $\leq$ 0.3dB;low IL $\leq$ 0.10dB
Return Loss	$\geq$ 55dB(UPC); $\geq$ 65dB(APC)	$\geq$ 30dB
Ceramic ferrule spec	125.5um concentricity deviations: < 1um	127um concentricity deviations: < 3um
Insert-pull test	500 times < 0.3dB	
Operation temperature	-40°C ~ +85°C	
Suitable fiber	PC/APC(9/125um)	PC(50/125um,62.5/125um)

## LC Uniboot Connector Mechanical Drawing



Unit: mm

### Remarks:

1. For the PC, the hex ferrule flange should with the dimension of  $2.54 \pm 0.02 \text{ mm}$
2. For the APC, the hex ferrule flange should with the dimension of  $2.72 \pm 0.02 \text{ mm}$