

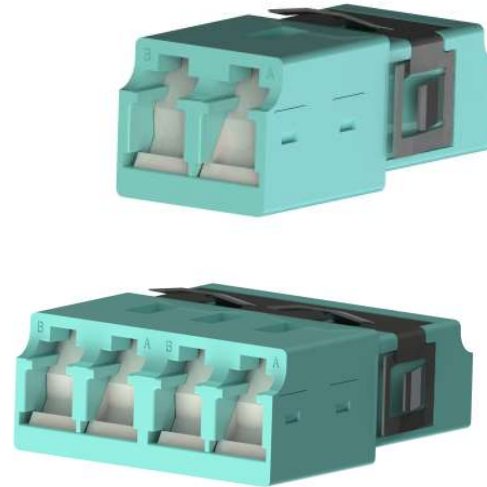


LC Series

LC Internal Shutter Adapter

Features:

- Duplex and Quad available
- Perfect fit Uniboot connector
- Dust and laser proof
- Ferrule endface not touch shutter
- PC/APC and Various color available
- Spring ensure stable fixture in panel
- Real one piece structure design
- Perfect fit 1/3U cassette
- IEC 61754-20 and GR-326-Core complaint
- RoHS/REACH and UL94-V0 inflammability complaint



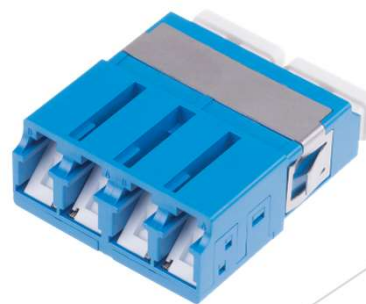


LC Series

LC Internal Shutter Adapter

Specification:

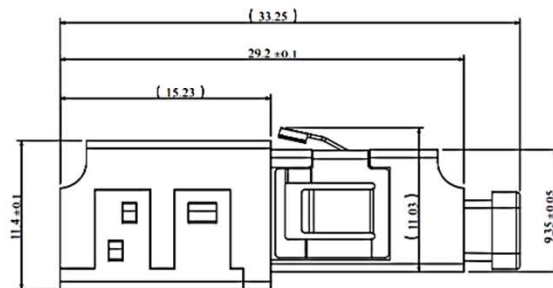
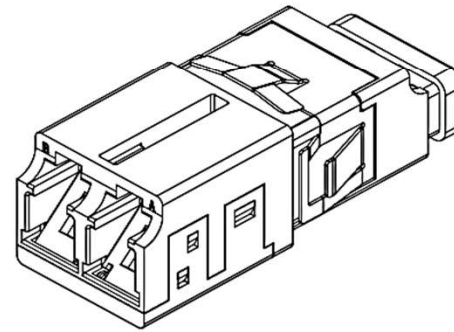
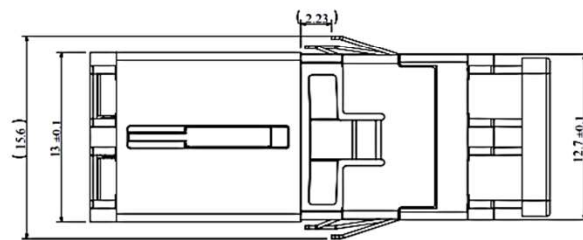
Items	Insertion Loss	Repeatability	Operating Temperature
SM/PC	$\leq 0.2\text{dB}$	$< 0.2\text{dB}(500\text{times})$	$-40^{\circ}\text{C} \sim +85^{\circ}\text{C}$
SM/APC	$\leq 0.2\text{dB}$	$< 0.2\text{dB}(500\text{times})$	$-40^{\circ}\text{C} \sim +85^{\circ}\text{C}$
MM/PC	$\leq 0.2\text{dB}$	$< 0.2\text{dB}(500\text{times})$	$-40^{\circ}\text{C} \sim +85^{\circ}\text{C}$



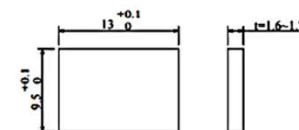


LC Series

LC Single Internal shutter Duplex Adapter with Stable Spring Mechanical Drawing



The suggested metal panel cutout dimensions:

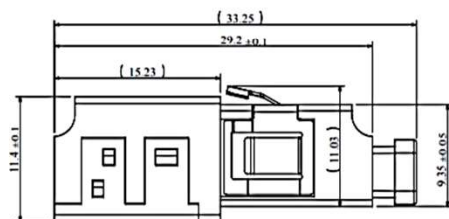
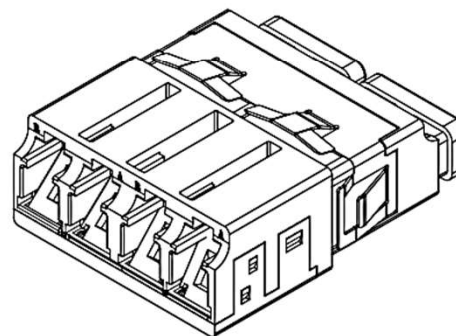
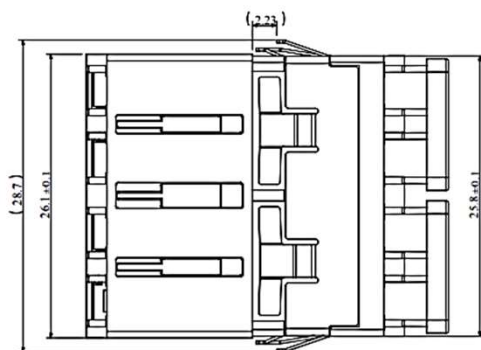


Unit: mm

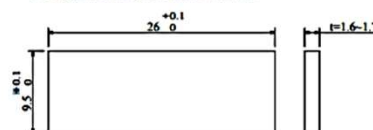


LC Series

LC Single Internal shutter Quad Adapter with Stable Spring Mechanical Drawing



The suggested metal panel cutout dimensions:

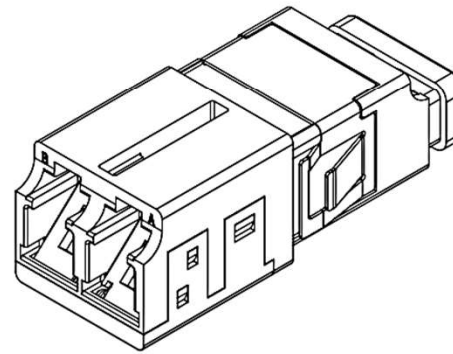
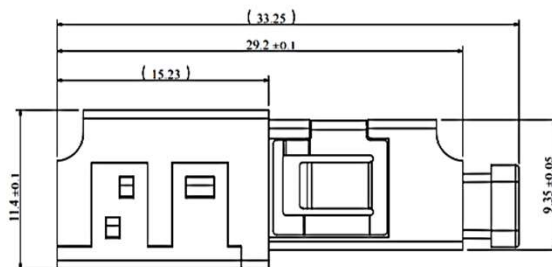
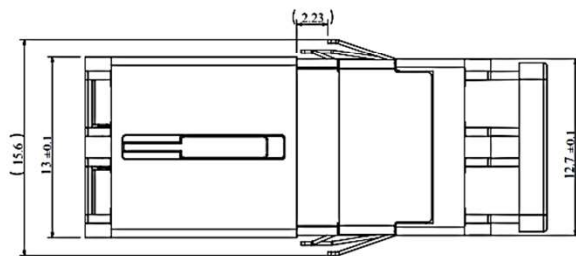


Unit: mm

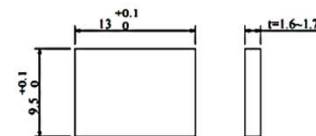


LC Series

LC Single Internal shutter Duplex Adapter Mechanical Drawing



The suggested metal panel cutout dimensions:

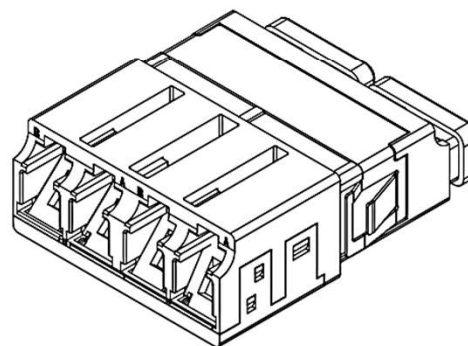
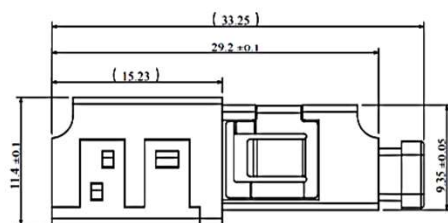
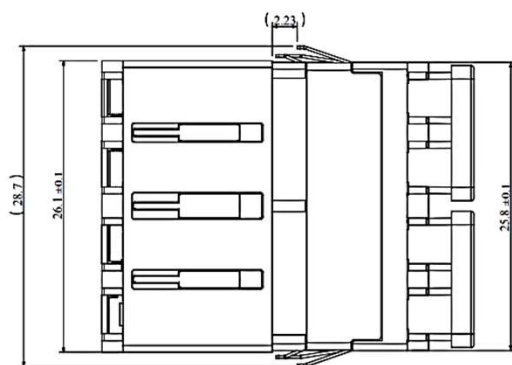


Unit: mm

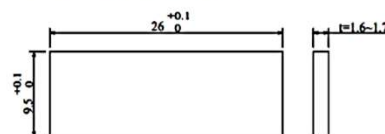


LC Series

LC Single Internal shutter Quad Adapter Mechanical Drawing



The suggested metal panel cutout dimensions:



Unit: mm