

50G QSFP28 10km LR Optical Transceiver Specification

Features

- 50 Gigabit Ethernet (50GbE) Transceiver
- Hot-pluggable QSFP28 form factor and Compliant with QSFP28 MSA
- Duplex LC connector
- Compliant to 26.5625 Gb/s PAM4 50GBASE-LR Optical Interface
- Compliant to 50GAUI-2 Serial Electrical Interface
- Maximum link length of 10km on Single Mode Fiber (SMF)
- Optical Transmitter: 1310nm uncooled DFB
- Optical Receiver: PIN photodetector with limiting amplifier
- Power Consumption < 3.5W
- I2C interface with integrated Digital Diagnostic Monitoring
- Operating Case Temperature: 0°C to 70°C
- Compliant to SFF-8636 and SFF-8679
- RoHS-6 complaint

Applications

- 50 Gigabit Ethernet (50GbE) Transceiver

1. General Description

The L-QSFP28-LR2-10 is a low power consumption QSFP28 PAM4 transceiver with high performance up to 50G high speed telecom and data communications over single mode fiber. It is compliant with the QSFP28 MSA, and IEEE 802.3cd. The Optical transmitter integrated with DSP that translated two lanes 26.6GBd NRZ to 26.6GBd PAM4. It contains a single LC connector for the optical interface and a 38-pin connector for the electrical interface. Digital Diagnostics functions are available via a 2-wire serial interface, as specified SFF-8636.

2. Absolute Maximum Ratings and Recommended Operating Conditions

Table 2.1 Absolute Maximum Ratings

Parameter	Min	Max	Unit
Storage Temperature	-40	85	°C
Storage Relative Humidity (non-condensation)		85	%
Supply Voltage	-0.5	3.6	V
Receiver Damage Threshold	5.2		dBm

Table 2.2 Recommended Operating Conditions

Parameter	Min	TYP.	Max	Unit
Operating Case Temperature	0		70	°C
Power Supply Voltage	3.13		3.47	V
Power Supply Current			1	A
Total Power Consumption			3.5	W
Data Rate (Optical)		53.125		Gbps
Data Rate (Electrical)		26.5625		Gbps
Transmission Distance			10	km

3. Optical Specifications

3.1 Optical Transmitter

Table 3.1 Transmitter Optical Interface

Parameter	Min	Type	Max	Unit	Note
Signaling Speed		26.5625		Gbps	
Operating Wavelength Range	1304.5		1317.5	nm	
Side Mode Suppression Ratio	30			dB	
Average Launch Power	-4.5		4.2	dBm	1
Optical modulation amplitude (OMA)	-1.5		4	dBm	2
Extinction Ratio	3.5			dB	
Launch Power in OMA Minus TDECQ	-2.9			dB	

Transmitter and dispersion eye closure for PAM4 (TDECQ)			3.2	dB	
RIN ₁₂ _{OMA}			-132	dB/Hz	
Optical Return Loss Tolerance			15.6	dB	
Transmitter Reflectance			-26	dB	3

Notes:

[1]Min average power is informative and not the principal indicator of signal strength. Power below this value cannot be compliant; however, a value above this does not ensure compliance.

[2]Even if the TDECQ < 1 .0dB, the OMA_{outer} (min) must exceed this value.

[3]Transmitter reflectance is defined looking into the transmitter.

3.2 Optical Receiver

Table 3.2 Receiver Optical Interface

Parameter	Min	Typ.	Max	Unit	Note
Signaling Speed		26.5625		Gbps	
Wavelength Range	1304.5		1317.5	nm	
Damage Threshold			5.2	dBm	1
Average Receive Power	-10.8		4.2	dBm	2
Receiver Sensitivity (OMA)			-8.4	dBm	3
Stressed Receiver Sensitivity _OMA			-6.6	dBm	4
Receiver Reflectance			-26	dB	
LOS Assert	-30			dBm	
LOS De-Assert			-13	dBm	
LOS Hysteresis	0.5			dB	
Stressed Eye Closure for PAM4 (SECQ)			3.2	dB	5

Notes:

[1] The receiver shall be able to tolerate, without damage, continuous exposure to an optical input signal having this average power level

[2] Average receive power (min) is informative and not the principal indicator of signal strength. A received power below this value cannot be compliant; however, a value above this does not ensure compliance.

[3] Receiver sensitivity (OMAouter) (max) is informative and is defined for a transmitter with a value of SECQ up to 3.2 dB for 50GBASE-LR. The value of BER is $2e-4$ (before FEC) and $1e-12$ (after FEC) within the average receive power.

[4] Measured with conformance test signal at TP3 (see 139.7.10) for the BER specified in 139.1.1 (IEEE802.3cdD3.5)

[5] These test conditions are for measuring stressed receiver sensitivity. They are not characteristics of the receiver

4. Electrical Specifications

Table 4.1 High Speed Electrical Specifications

Parameters	Min	Typ.	Max	Unit
Input Differential Impedance		100		Ω
Differential Data Input Amplitude			900	mV
Differential Data Output Swing			900	mV

5. User Interface

5.1 Management Interface

2-Wire Serial Address: 1010000x (A0H)

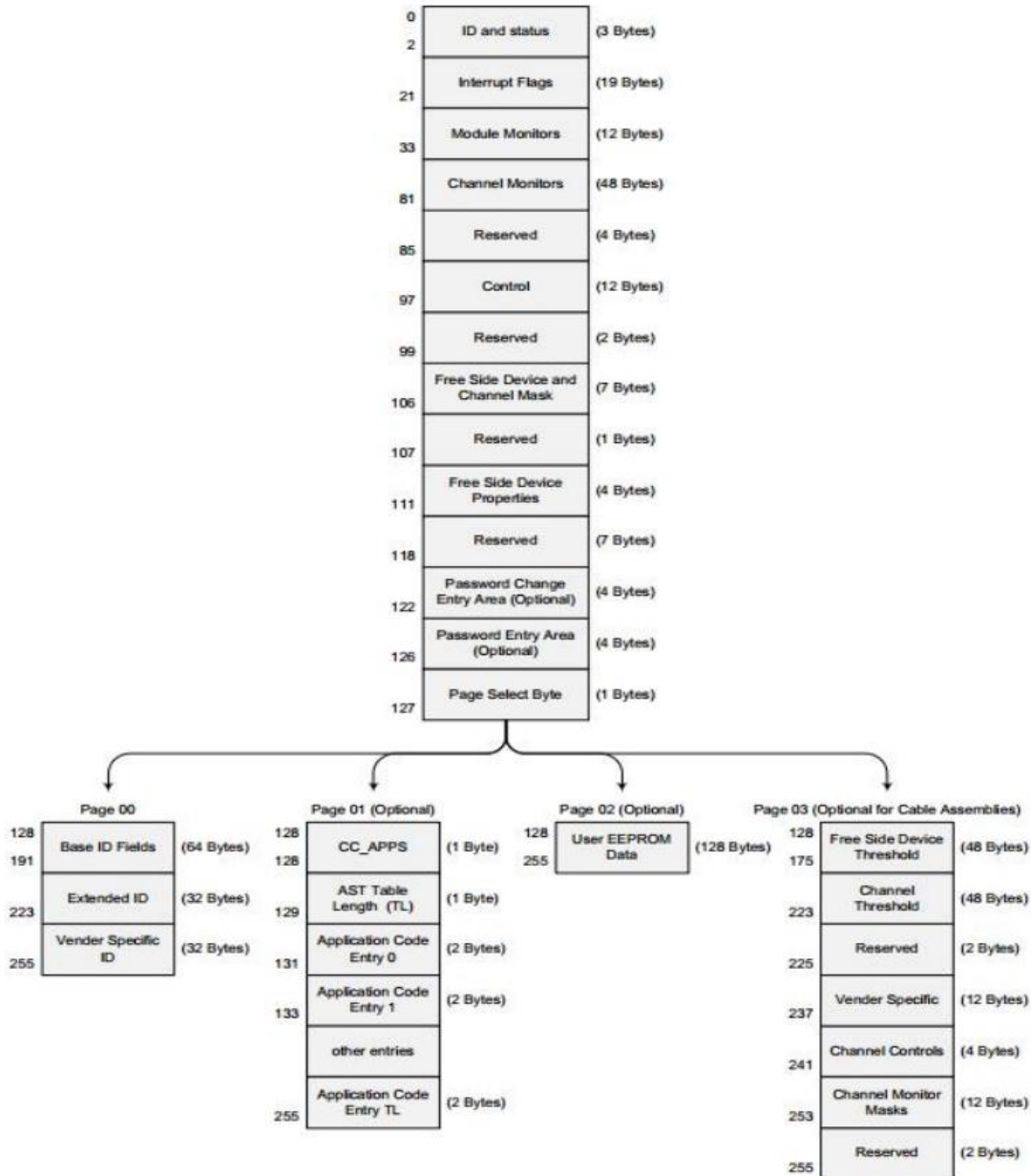


Figure 5.1 QSFP28 Memory Map

5.2 Digital Diagnostic Monitor Accuracy

The following characteristics are defined over recommended operating conditions.

Table 5.2 Digital Diagnostic Monitor Accuracy

Parameter	Accuracy	Unit
Internally Measured Transceiver Temperature	±3	deg.C
Internally Measured Transceiver Supply Voltage	±5	%
Measured Tx Bias Current	±10	%
Measured Tx Output Power	±3	dB
Measured Rx Received Average Optical Power	±3	dB

6. Pin Assignment and Pin Description

QSFP28 transceiver pad layout, host PCB QSFP28 pinout, and PIN descriptions are as follows:

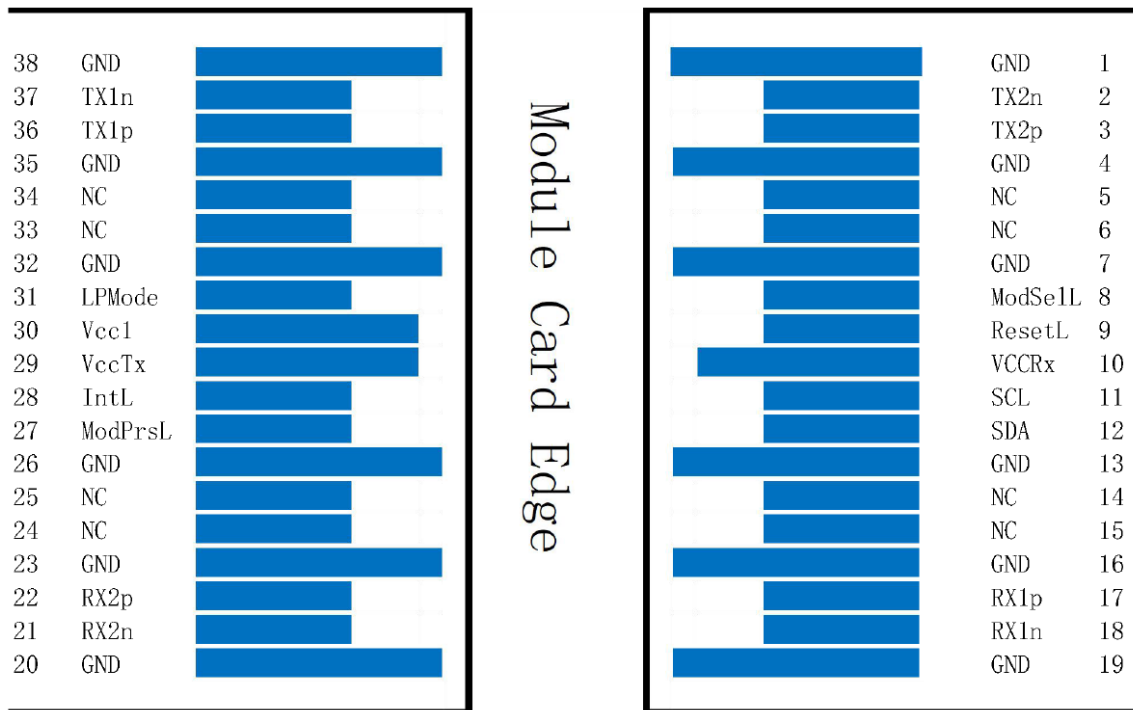


Figure 6.1 QSFP28 Transceiver Electrical Pad layout

Table 6.1 Pin Description

Pin	Logic	Symbol	Description	Plug Sequence	Notes
1		GND	Ground	1	1
2	CML-I	Tx2n	Transmitter Inverted Data Input	3	
3	CML-I	Tx2p	Transmitter Non-Inverted Data Input	3	
4		GND	Ground	1	1
5	CML-I	Tx4n	Transmitter Inverted Data Input	3	3
6	CML-I	Tx4p	Transmitter Non-Inverted Data Input	3	3
7		GND	Ground	1	1
8	LVTTL-I	ModselL	Module Select	3	
9	LVTTL-I	ResetL	Module Reset	3	
10		Vcc Rx	+3.3V Power Supply Receiver	2	2
11	LVC MOS-I/O	SCL	2-wire serial interface clock	3	
12	LVC MOS-I/O	SDA	2-wire serial interface data	3	
13		GND	Ground	1	1
14	CML-O	Rx3p	Receiver Non-Inverted Data Output	3	3
15	CML-O	Rx3n	Receiver Inverted Data Output	3	3
16		GND	Ground	1	1
17	CML-O	Rx1p	Receiver Non-Inverted Data Output	3	
18	CML-O	Rx1n	Receiver Inverted Data Output	3	
19		GND	Ground	1	1
20		GND	Ground	1	1
21	CML-O	Rx2n	Receiver Inverted Data Output	3	
22	CML-O	Rx2p	Receiver Non-Inverted Data Output	3	
23		GND	Ground	1	1
24	CML-O	Rx4n	Receiver Inverted Data Output	3	3
25	CML-O	Rx4p	Receiver Non-Inverted Data Output	3	3
26		GND	Ground	1	1
27	LVTTL-O	ModPrsL	Module Present	3	
28	LVTTL-O	IntL	Interrupt	3	
29		Vcc Tx	+3.3V Power supply transmitter	2	2
30		Vcc1	+3.3V Power supply	2	2
31	LVTTL-I	LPMODE	Low Power Mode	3	
32		GND	Ground	1	1
33	CML-I	Tx3p	Transmitter Non-Inverted Data Input	3	3
34	CML-I	Tx3n	Transmitter Inverted Data Input	3	3
35		GND	Ground	1	1
36	CML-I	Tx1p	Transmitter Non-Inverted Data Input	3	
37	CML-I	Tx1n	Transmitter Inverted Data Input	3	
38		GND	Ground	1	1

Note:

[1] GND is the symbol for signal and supply (power) common for the QSFP28 module. All are common within the QSFP28 module and all module voltages are referenced to this potential unless otherwise noted. Connect these directly to the host board signal-common ground plane.

[2] Vcc Rx, Vcc1 and Vcc Tx are the receiver and transmitter power supplies and shall be applied concurrently.

[3] Not used.

7. Package Dimensions

Figure 7.1 shows the package dimensions of the module. The module is designed to be compliant with QSFP28 MSA specification. Package dimensions are specified in SFF-8661.

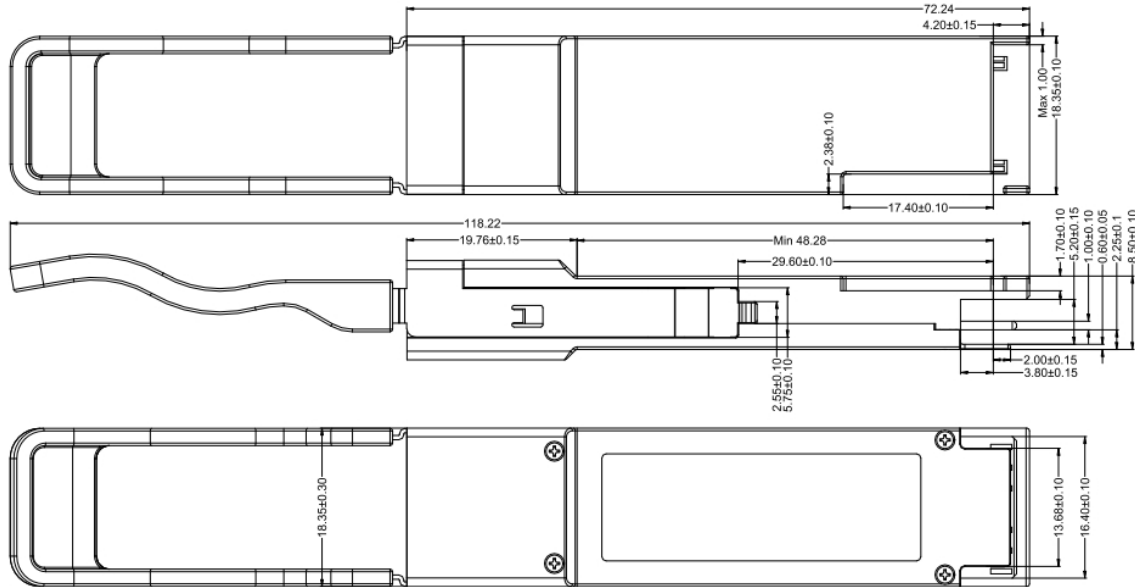


Figure 7.1 Package Dimensions

8. Laser safety and Electromagnetic Compatibility

8.1 Laser safety

All transceivers are Class 1 Laser products per FDA/CDRH and IEC-60825-1 & IEC60825-2 standards. They must be operated under specified operating conditions.

8.2 Electromagnetic Compatibility

All transceivers are designed to meet FCC Class B limits.

9. Ordering Information

Part Number	Temperature Range	Distance	Fiber Type	E/O	O/E
L-QSFP28-LR2-10	0°C to + 70°C	10km	SMF	DML	PIN